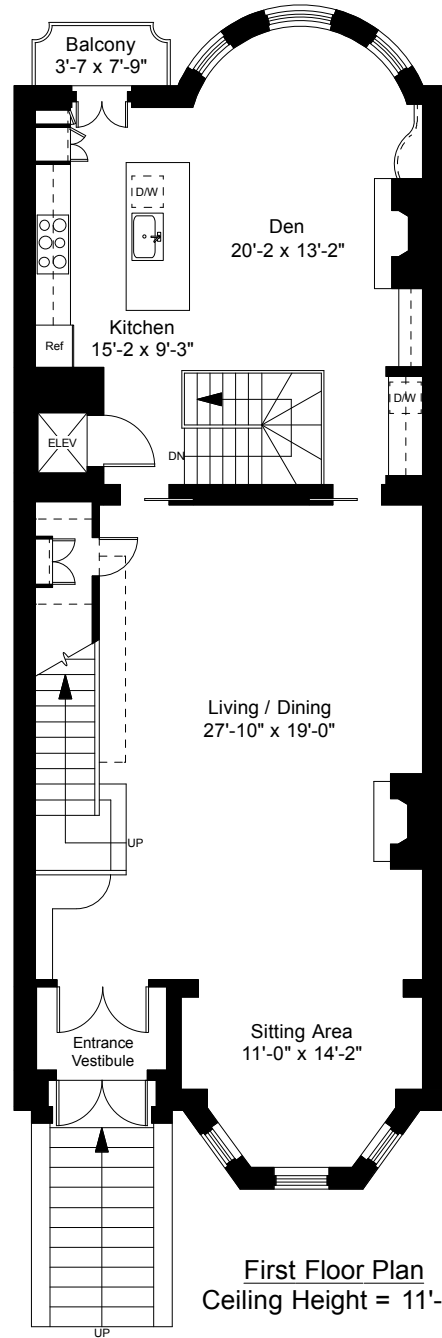
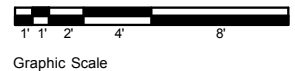


Garden Level Plan
Ceiling Height = 9'-2"

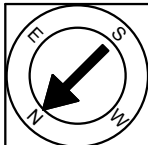


First Floor Plan
Ceiling Height = 11'-2"

132 Marlborough Street
Boston, MA 02116



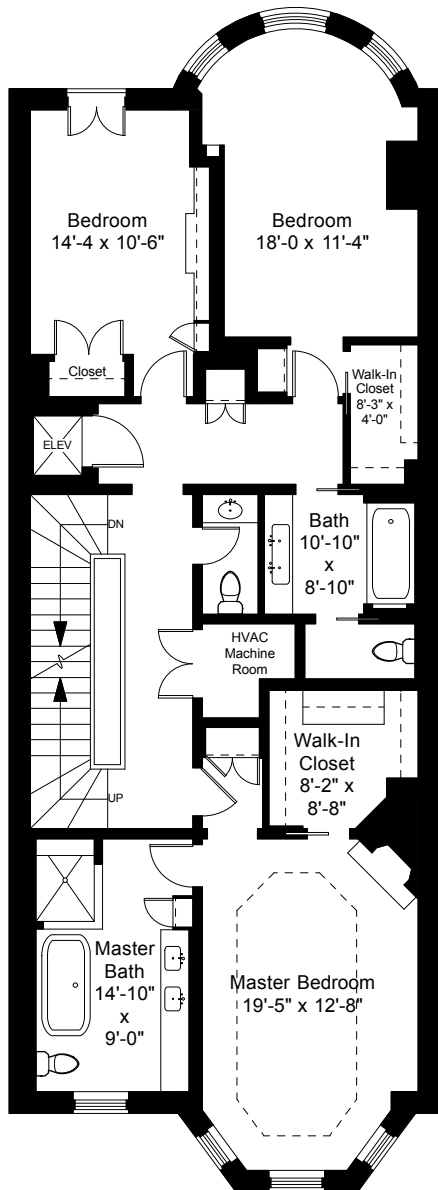
1



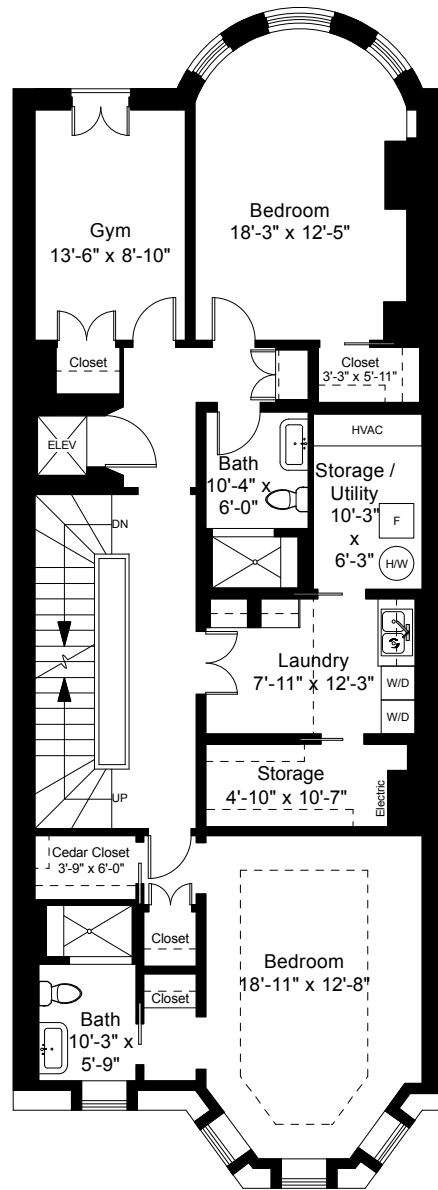
Completed: September 2016

Note: Dimensions are not guaranteed and are provided for informational purposes only. Individual room dimensions are not used to calculate overall square footage.

NATIONAL
FLOOR PLANS
& PHOTOGRAPHY
(800) 328-0217

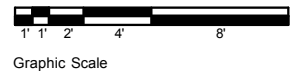


Second Floor Plan
Ceiling Height = 11'-2"

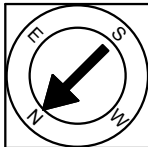


Third Floor Plan
Ceiling Height = 10'-4"

132 Marlborough Street
Boston, MA 02116



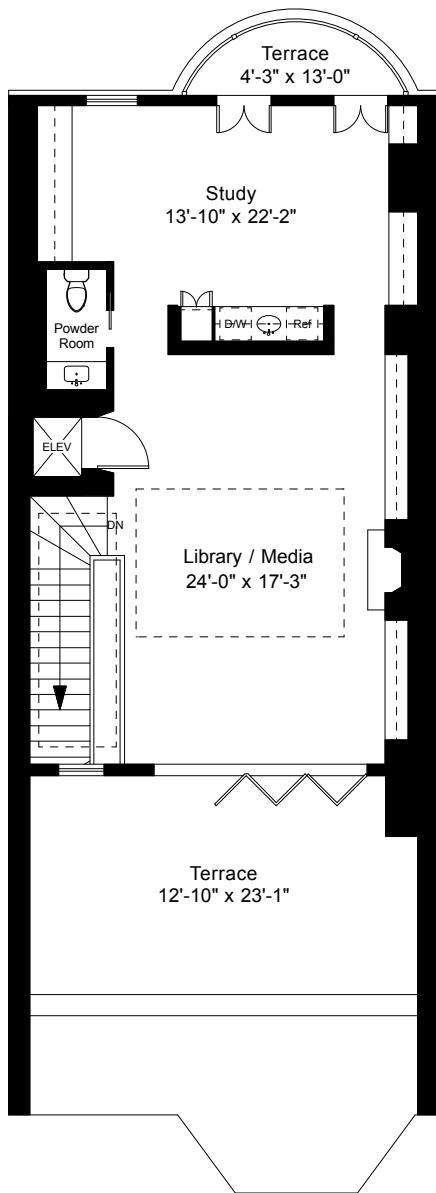
2



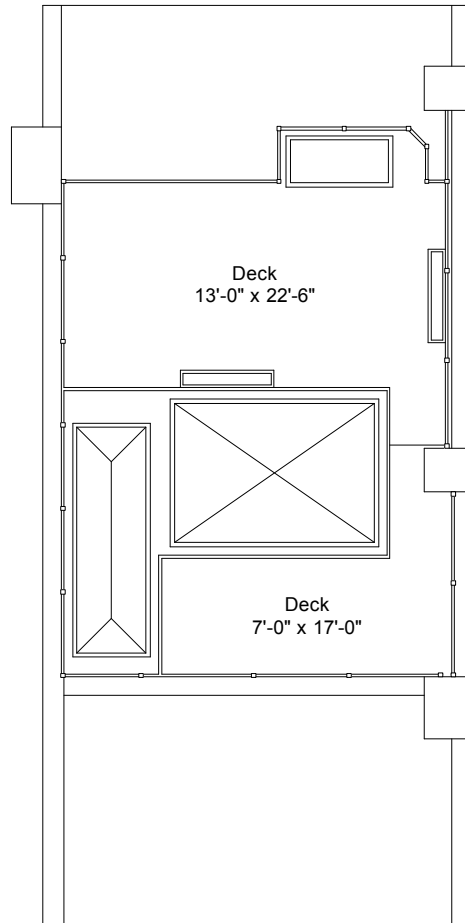
Completed: September 2016

Note: Dimensions are not guaranteed and are provided for informational purposes only. Individual room dimensions are not used to calculate overall square footage.

NATIONAL
FLOOR PLANS
& PHOTOGRAPHY
(800) 328-0217

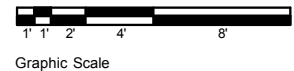


Fourth Floor Plan
Ceiling Height = 8'-10"

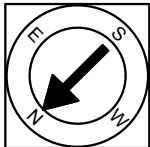


Roof Plan

132 Marlborough Street
Boston, MA 02116



3



Completed: September 2016

Note: Dimensions are not guaranteed and are provided for informational purposes only. Individual room dimensions are not used to calculate overall square footage.

NATIONAL
—FLOOR PLANS—
& PHOTOGRAPHY
(800) 328-0217